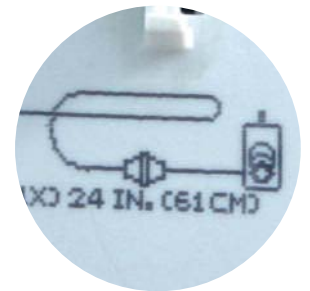


# alphaJET evo Continuous InkJET system



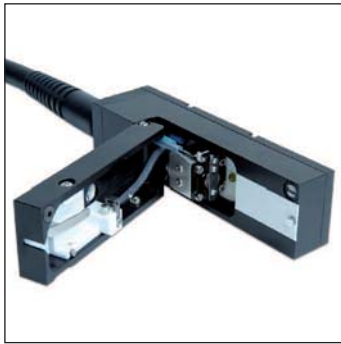
## “The Intelligent” Smart. Runs. Always.

- Very high functionality through extensive range of standard features and expandability
- Maximum availability at minimum consumption
- Highest print resolution up to 8 lines of text
- User-friendly, intuitive operation
- Can easily be integrated in data and machine networks



... the leading manufacturer of coding and marking systems

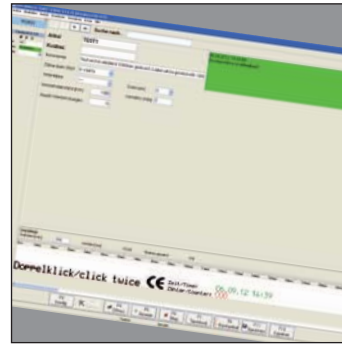
# alphaJET evo Continuous InkJET system



Print head



Rear view with connections



Operation via PC software

The versatility of the alphaJET evo is impressive. Thanks to its high resolution, it prints up to eight lines of text (static or dynamic), and a huge variety of barcodes and graphics. The alphaJET evo provides excellent print quality even at high production speeds. It requires little maintenance only and is so easy to use.

## Housing

- Modern design
- Protection class IP 65
- Stainless steel
- Optional: integrated UPS

## Touch screen display

- 10.4" TFT colour touchscreen display with comfortable user interface
- Solvent-resistant
- Resistive display: swivelling and removable
- Graphic user interface (WYSIWYG)

## Ink system

- Modular and easily accessible construction
- High availability due to durable components
- Easy and time-saving maintenance
- Efficient and ecological consumption figures
- No cartridge system
- Solvent recovery as standard

## Print head

- Optimized design (head flap)
  - > Easy cleaning on the line
- Nozzle seal -> optimal start-up behaviour
- Head heating -> stable droplet formation
- Integrated visual ink jet monitoring (stroboscopic magnifying glass)

## Interfaces and I/O standard

- Ethernet
- 2 x RS 232
- 2 Parallel inputs for product sensor and encoder
- Remote socket
- Digital I/O port with 8 inputs and 4 outputs
- Freely programmable alarm relay
- USB
- Optional: four-colour signal beacon
- Optional: customer-specific software (PrintControl®)

## Technical data

Dimensions:	Control unit: 320 x 320 x 700 mm (incl. operating terminal)	
	Print head: 40 x 40 x 145 mm, L x W x H	
Print system:	Continuous inkJET system consisting of control unit and printing unit	
Ink system:	One-liter bottles for ink and solvent. Easily replaceable. Solvent consumption only 2 ml/h at 20°C thanks to solvent recovery. No compressed air connection necessary	
Ink types:	Large variety of opaque and dye-based inks for multiple materials and applications	
Working conditions:	Temperature: +5°C to +45°C, max. 90% relative air humidity, non-condensing.	
Hardware:	Control unit and printing unit are independent of each other. This means that additional printing units can be controlled and synchronized by one single master unit. Peripheral equipment, such as an xy-axis control system, is controlled and synchronised via a previously defined interface.	
Text composition:	Automatic time and date functions, consecutive numbering, bar codes, data matrix codes, logos, etc., TrueType fonts	
Error diagnosis:	Automatic diagnosis in clear text	
Print speed:	Up to 2800 characters per second	
Print head distance:	1 - 25 mm	
License:	Standard	Professional
Print resolution:	32 pixels	48 pixels
Type height:	0.8 to 15 mm 5 lines (5x5 matrix)	8 lines (5x5 matrix)
Power supply:	86 to 264 V ± 10%, 50 - 60 Hz, current consumption. max. 1.0 / 0.5 A	
Safety standard:	Ink return control; Automatic viscosity and ink level control; Remote monitoring of printing errors; Electronics and ink system are installed separately; Literally emission-free	

Subject to technical and design changes.  
E&OE

